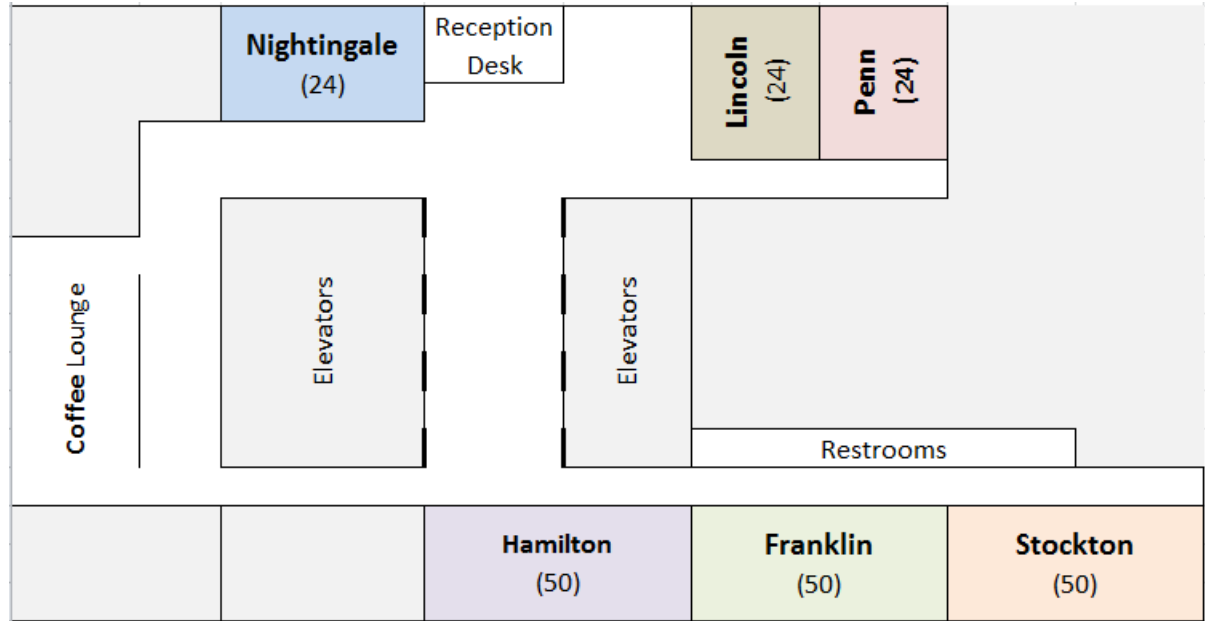


HEALTH CARE IT ROUNDTABLE Agenda – December 18th, 2015

		Stockton Room (50)	Franklin Room (50)	Hamilton Room (50)	Lincoln Room (24)	Penn Room (24)	Nightingale Room (24)	
8:00	8:55	Coffee and light breakfast: Check In, Get your Name tag, & Mingle						
8:55	9:00	Assemble in the Triple Room (Stockton, Franklin, & Hamilton)						
9:00	9:05	Quick Instructions: Gordon Tait, EMR Group Architect, Penn Medicine						
9:15	10:00	From Zero to Hero: Getting the Most Out of Care Everywhere Workshop Led by Gordon Tait Penn Medicine	Clinical Informatics Liaisons: Epic Support through Relationship Building by Star Watts & Raven Mondo Lancaster General Health	Before the Clock Strikes 12: The Inpatient Implementation Clinical Cutover! by Yvette Helmbold & Linda Musser Geisinger Health System	EpicLink and New Account Submission Process by David Smith Penn Medicine	Ambulatory Go Lives by Holy Spirit		
10:15	11:00	Care Everywhere Summary of Care Inbound Speed Panel & Discussion Led by CHOP, Geisinger, & Nemours	How to Improve Clinical Outcomes by Using Business Intelligence Tools by Carlos Rodriguez Lancaster General Health	A Journey to Pick a Secure Texting Platform. by Maruf Haider & Madhu Ramaswamy, MD INOVA	Creating Patients and Placing Referral Orders in EpicCare Link by Michele Kuhar & Jeff Martinez Children's Hospital of Philadelphia	Ambulatory Go-Live: Lessons Learned & Applied to Acute Go-Live by Hartford		
11:15	11:45	Lunch In The Triple Room						
12:00	1:00	Discussion: Stage 2 Attestation Readiness... What's Left? Led by Mary Logiudice & Jules Lehr Penn Medicine	Optimization: An Integrated Approach by Kimberly Costagna & Rick Kerr, RPh Lehigh Valley Health Network	Patient Entered Flowsheets: Apple HealthKit, Withings, & FitBit Integration by Gordon Tait Penn Medicine	Preparation Work for the v2015 Upgrade Discussion Sarah Morgan Penn Medicine			
1:15	2:00	Care Everywhere Summary of Care Outbound Speed Panel & Discussion Led by CHOP, Geisinger, & Penn	Business Continuity: Meeting End-User Expectations by Rick Kerr, RPh Lehigh Valley Health Network	Anatomy of an Interruptive Alert by Eli Lourie, MD, MBI, FAAP Children's Hospital of Philadelphia	Remediating a Veteran Epic System in Preparation for Epic Inpatient by Wade Becker Penn Medicine	MyChart Direct Scheduling by Anana Reynolds & Jake Moore Penn Medicine		
2:15	3:00	Discussion: Stage 3 Meaningful Use... That Which is Coming Led by Mary Logiudice & Jules Lehr Penn Medicine	Management Breakout Discussion: Change Control, Content Mgmt, Certification Policies, etc. Led by John Salmon Penn Medicine	Integrating Epic with a Vendor Netural Archive for PACS Viewing: Desktop, Haiku, Canto, & Beyond by Dan Morton & Gordon Tait Penn Medicine	Preparing for Inpatient Go-Live by Michael Sheinberg, MD & Matthew Miller, DO Lehigh Valley Health Network	MyChart Child/Teen Proxy by Bridget St. John & Todd Kirkes Penn Medicine		
		Website: www.HealthCareITRoundtable.com or www.ups.upenn.edu/roundtable			Next: March 11, 2016		LinkedIn Group: Healthcare IT Roundtable	MOVED OR NEW TOPIC



Agenda Topic Descriptions:
Updates in bold blue!

Stockton Room:

From Zero to Hero: Getting the Most Out of Care Everywhere

Workshop Led by Gordon Tait (Application Architect) of Penn Medicine.

Care Everywhere is a two-way street. By working together as much as possible, we can improve the workflows for exchanging patient data. Better for our own staff, better for related outside staff, and certainly better for the patients. We will talk about some of the ways that we can align our systems to do so, what we each are doing now, what we plan on doing already, and what we each can do. **This will kick off a sub-group of the Roundtable as a sort of Care Everywhere Consortium.**

Post-poned: eReferral Through Care Everywhere

Replaced with: Care Everywhere Summary of Care Inbound Speed Panel & Discussion Panel & Discussion Led by CHOP, Geisinger, and Nemours.

Panel members will each describe their particular inbound Summary of Care workflows for 5-8 minutes each. Then the session will open up into a discussion among all in attendance.

Discussion: Stage 2 Attestation Readiness... What's Left?

Led by Mary Logiudice (Meaningful Use Coordinator) and Juliane Lehr of Penn Medicine.

Attendees will discuss their final preparations for Stage 2 attestations.

Care Everywhere Summary of Care Inbound Speed Panel & Discussion

Panel & Discussion Led by CHOP, Geisinger, and Nemours.

Panel members will each describe their particular inbound Summary of Care workflows for 5-8 minutes each. Then the session will open up into a discussion among all in attendance.

Discussion: Stage 3 Meaningful Use... That Which is Coming

Led by Mary Logiudice (Meaningful Use Coordinator) and Juliane Lehr of Penn Medicine.

Attendees will discuss what challenges are coming with Stage 3 of M/U.

Franklin Room:

Clinical Informatics Liaisons: Epic Support through Relationship Building

Presented by Star Watts, BSN, RN, CRNI, VA-BC (Manager, Clinical Informatics) and Raven Mondo, LPN (Clinical Informatics Liaison) of Lancaster General Health.

See how this organization conceived, created and developed a unique team of nurses called Clinical Informatics Liaisons. These nurses assist the providers with all aspects of Dragon and Epic (i.e. Inpatient, Ambulatory, Cupid, Beacon, and Anesthesia) in order to provide comprehensive clinical support through developing and maintaining provider relationships.

How to Improve Clinical Outcomes by Using Business Intelligence Tools

Presented by Carlos Rodriguez of Lancaster General Health.

Lancaster General will present on how they were able to use business intelligence tools to improve clinical outcomes.

Optimization: An Integrated Approach

Presented by Richard Kerr, RPh (Administrator Information Services, Project Director Epic Transformation) and Kimberly Costagna (Administrator Information Services) of the Lehigh Valley Health Network.

Lehigh Valley Health Network will describe their recent inpatient go-live and the transition of Epic stabilization operations to longer term optimization. Topics will include prioritization and tracking, work allocation and governance over optimization activities.

Business Continuity: Meeting End-User Expectations

Presented by Richard Kerr, RPh (Administrator Information Services, Project Director Epic Transformation) of the Lehigh Valley Health Network. Lehigh Valley Health Network will describe the strategy employed to ensure business continuity of the integrated clinical information system implemented in February and August 2015. Prior infrastructure and the philosophy leading to the decisions for full continuity and redundant disaster recovery will be discussed.

Management Breakout Discussion

led by John Salmon (Senior Director of Application Architecture and Emerging Technologies) of Penn Medicine

Attending management will compare and contrast their models for change control, content management, certification policies, and so forth.

Hamilton Room:

Before the Clock Strikes 12: The Inpatient Implementation Clinical Cutover!

Presented by Yvette Helmbold, RN (Nurse Informatician) and Linda Musser (Director) of the Health Information Technology Team of the Geisinger Health System.

Ensuring patient safety during an implementation from paper or one E.H.R. system to another is a top priority for both IT teams and clinicians. Hear about the standardized process utilized for seven separate hospital conversions to Epic. Learn about planning, “cut over” team structure, and risk migration, utilizing this process and toolset..

Post-poned: Managing Patients and Appointments Through Epic APIs

Time Changed for: A Journey to Pick a Secure Texting Platform

Presented by Maruf Haider and Madhu Ramaswamy, MD of INOVA.

INOVA, a community-academic health system, will describe their pilot programs to compare different secure text messaging systems.

Patient Entered Flowsheets: Apple Healthkit, Withings, & Fitbit Integration

Presented by Gordon Tait (Application Architect) of Penn Medicine.

Penn Medicine will present on what they have implemented for Patient Entered Flowsheets both before and after Apple came out with “Health” and its HealthKit. They will also touch on the planning and actual setup to get it to work, as well as some of the challenges of adoption.

Anatomy of an Interruptive Alert

Presented by Eli Lurie, MD, MBI of the Children’s Hospital of Philadelphia.

Using an alert created for a QI project as a case study, we will explore Clinical Decision Support. We will discuss workflow analysis, the 5 rights of CDS, complex Epic build, and have data to show the effect of the alert.

Integrating Epic with a Vendor Neutral Archive for PACS Viewing: Desktop, Haiku, Canto, & Beyond

Presented by Dan Morton (IT Tech Director Radiology) and Gordon Tait (Application Architect) of Penn Medicine.

Penn Medicine will present their experience with integrating a vendor neutral archive, Mach 7, with Epic. This will include the projected usefulness of the integration for desktop, mobile, and remote users, the setup work that was done, and the challenges along the way.

Lincoln & Penn Rooms (combined):

EpicCare Link and New Account Submission Process

Presented by David Smith (Physician Outreach Manager) of Penn Medicine.

The Link presentation will focus on Penn Medicine activating the New Account Submission functionality. The New Account Request page helps manage both site and user access requests, create user accounts quickly and easily, and simplifies the administrative process for site and user creation.

Creating Patients and Placing Referral Orders in EpicCare Link

Presented by Michele Kuhar (Systems Analyst) and Jeff Martinez (Manager eHealth & Telemedicine) of the Children's Hospital of Philadelphia.

- The build and challenges of giving CHOP's Referring Physician Community access to referral ordering and create patient functionality.
- A review of CHOP's process for making key decisions on the implementation of this functionality.

Preparation Work for the Version 2015 Upgrade

Presented by Sarah Morgan (Application Manager) of Penn Medicine.

Preparation work for the version 2015 upgrade will be discussed. With an ever increasing number of Epic applications in Production use, each Epic upgrade is becoming more critical. Sarah will talk about all the planning and work that goes on to ensure that the upgrade event itself is as seamless and uneventful as possible. Hear from a large academic medical center whom historically let others be the early adopters of new versions as they come out of the shadows to rapidly adopt the 2015 version between other major projects. The Enhancement selection process will also be discussed.

Remediating a Veteran Epic System in Preparation for Epic Inpatient

Presented by Wade Becker (IT Director of Operations & Ambulatory) of Penn Medicine.

Penn Medicine will talk about their appreciable list of projects under way in preparation for the Epic Inpatient Go Live in October, 2016. Having been on Epic Ambulatory since 1998, Penn Medicine has a "robust" system that needs numerous areas of the system to be cleansed to best align it with bringing up Inpatient Epic and to make it more sustainable.

Preparing for Inpatient Go-Live

Presented by Michael Sheinberg, MD (Project Medical Director Epic Transformation) and Matthew Miller, DO (Inpatient Physician Lead Epic Transformation) of the Lehigh Valley Health Network.

LVHN recently completed a big-bang inpatient go-live in August 2015. They will review achievements and lessons learned in transitioning from a best-of-breed system to Epic. Highlights will include go-live support for providers, transitioning from paper notes to electronic documentation, and re-inventing order sets from the legacy system in Epic.

Nightingale Room:

Ambulatory Go Lives

Presented by Holy Spirit.

Holy Spirit will present their experiences and lessons learned from their recent Epic Ambulatory Go-Lives..

EpicCare Ambulatory Go-Live: Lessons Learned and Applied to EpicCare Acute Go-Live

Presented by Hartford Health.

Hartford will talk about their Go-Live experience with Ambulatory, their lessons learned, and how they plan on applying those lessons to their upcoming Inpatient Go-Live.

MyChart Direct Scheduling

Presented by Anana Reynolds and Jake Moore of Penn Medicine.

myPennMedicine patient self-scheduling gives patients the ability to schedule both new and return office visits into Cadence utilizing scheduling questionnaires.

MyChart Child/Teen Proxy

Bridget St. John (Coordinator for the AVP of EHR Integration) and Todd Kirkes (Senior Application Manager for MyChart) of Penn Medicine.

Bridget and Todd will present on the planning and experiences Penn Medicine has had recently with rolling out Proxy access in MyChart.

Map and Directions: 9th Floor, West Tower, 1500 Market St, Philadelphia, PA

Amtrak Trains: Get off at the Amtrak 30th Street Station stop. Amtrak riders will need to go upstairs to the main enormous room. You can take a Taxi to 1500 Market by going west out of the Amtrak building. Or you can take a Septa train EASTbound (towards the skyscrapers) one stop to Suburban Station - tickets are usually not checked within the city.

Septa Trains: Get off at the Suburban Station stop. Exit out of Suburban Station by following the signs for Market Street, the lower the street number the better. If you come out on a numbered street you may need to walk a block south to Market Street. Once on Market Street, walk over to 1500 Market which is next to City Hall (white building in the middle of Market Street around 15th).

Driving in:

Each direction of travel on I-76 has its own Exit 345.

The building is in "Center City" Philadelphia just west of and next to City Hall (white building in the middle of Market Street) on Market Street.

If you are coming East(south) on the I-76 highway, then you can exit at the 30th Street Station, Exit 345. You will need to go around the 30th Street Station to get to Market Street. At the exit ramp traffic light, you will have to take a right. You will pass under a glass walking bridge and then pass under part of the train station. You will want to be in the 2nd from the left lane after you pass under that part of the station (since the left-most lane will trap you into driving around the station itself like a Taxi). If you do get stuck in that lane, you can circle around and try again. You will come up to the Market Street traffic light, take a left onto Market Street. You will cross over the river and go down the main street of skyscrapers.

If you are coming from I-76 West(north), take Exit 345 and that will bring you up a ramp to an intersection with Chestnut Street. You want to go straight to Market Street and work your way to the right lane so that you can take a right onto Market Street. At the Market Street traffic light, take a right onto Market Street. You will cross over the river and go down the main street of skyscrapers.

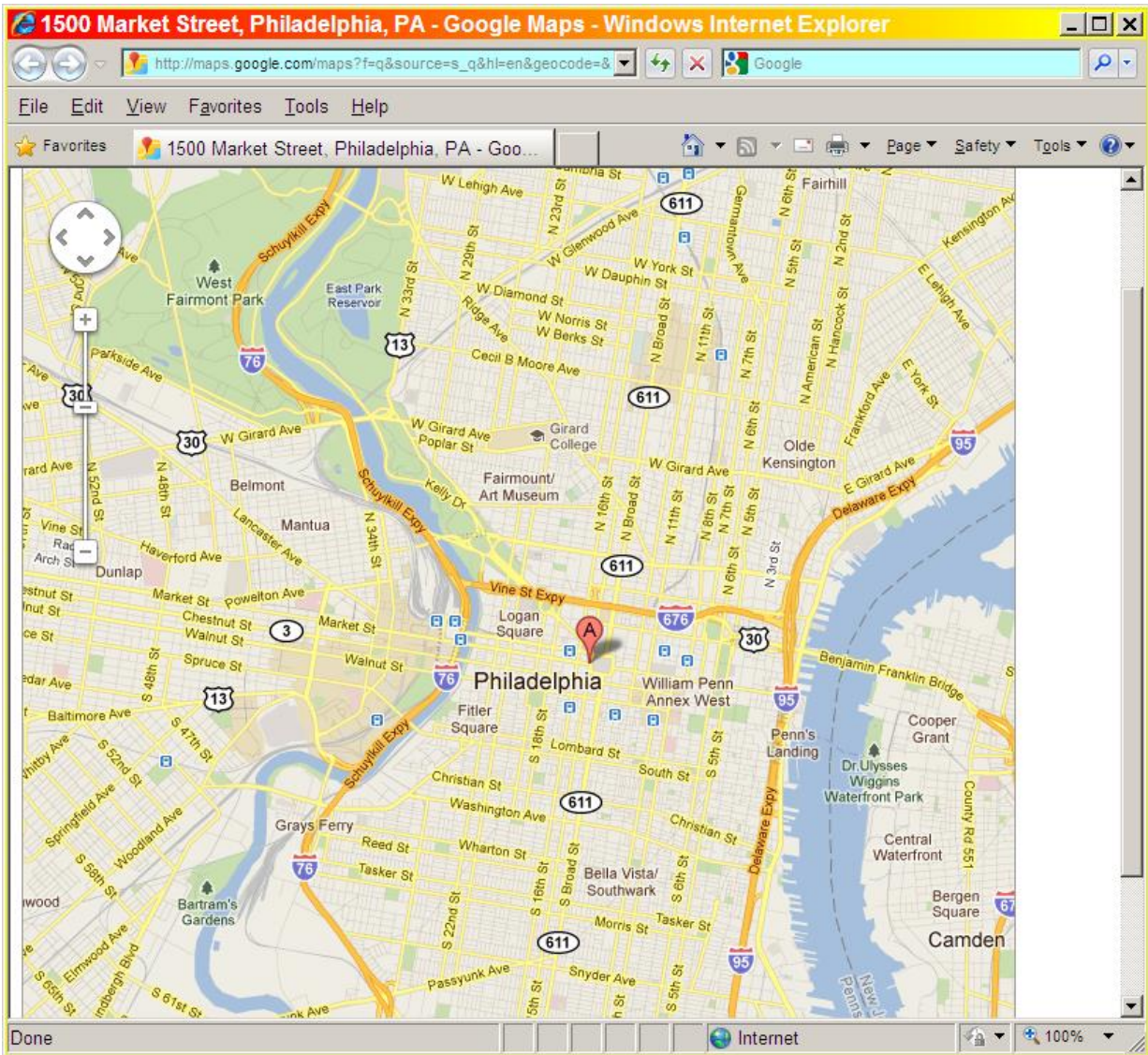
There may be parking in garages at 1800 Market Street (Crowne Plaza hotel 215-567-6326) as well as 1700 Market Street (Expert Parking 215-231-3155). Driving around City Hall should be avoided for sanity sake so you will want to park before it. You can then walk over to Centre Square at 1500 Market Street which has a large clothespin "sculpture".

1500 Market Street (Centre Square - West Tower):

Once in the lobby, you will need to go up to the security desk for the West Tower. Tell them that you are attending a conference on the 9th floor in the Penn Medicine Center for Innovation and Learning. Tell them your name - bring a photo ID in case they ask for it. You will receive a visitor sticker for the day.

Take the elevators up to the 9th floor and go in through the glass doors to where reception persons are seated. We will be using the Franklin and Jefferson Rooms. We will have two connecting rooms so that we can have parallel sessions. Once in the rooms, please go up to the Signin table to let us know that you have arrived and to get your conference name tag.

When in doubt, please use online Map programs from your departure point, etc.!



Other Presentation/Discussion topics not listed in this Roundtable will be candidates for the next Roundtable. For information, please contact Gordon Tait at taigt@uphs.upenn.edu. If you are having difficulties finding the event on your way to it, then feel free to contact us via cell 215-275-6028. There are a variety of hotels within a few blocks of the event and City Hall.